

ERSATZTEILE
SPARE PARTS

COMAPCT STRIPPER 18V

BESTELL-NR.
ORDER NO. **111 120 000**



Ab Maschinennr / from machine no

J0049-1211

Baujahr / production year

2022-07

Bis Maschinennr / up to machine no

Baujahr / production year

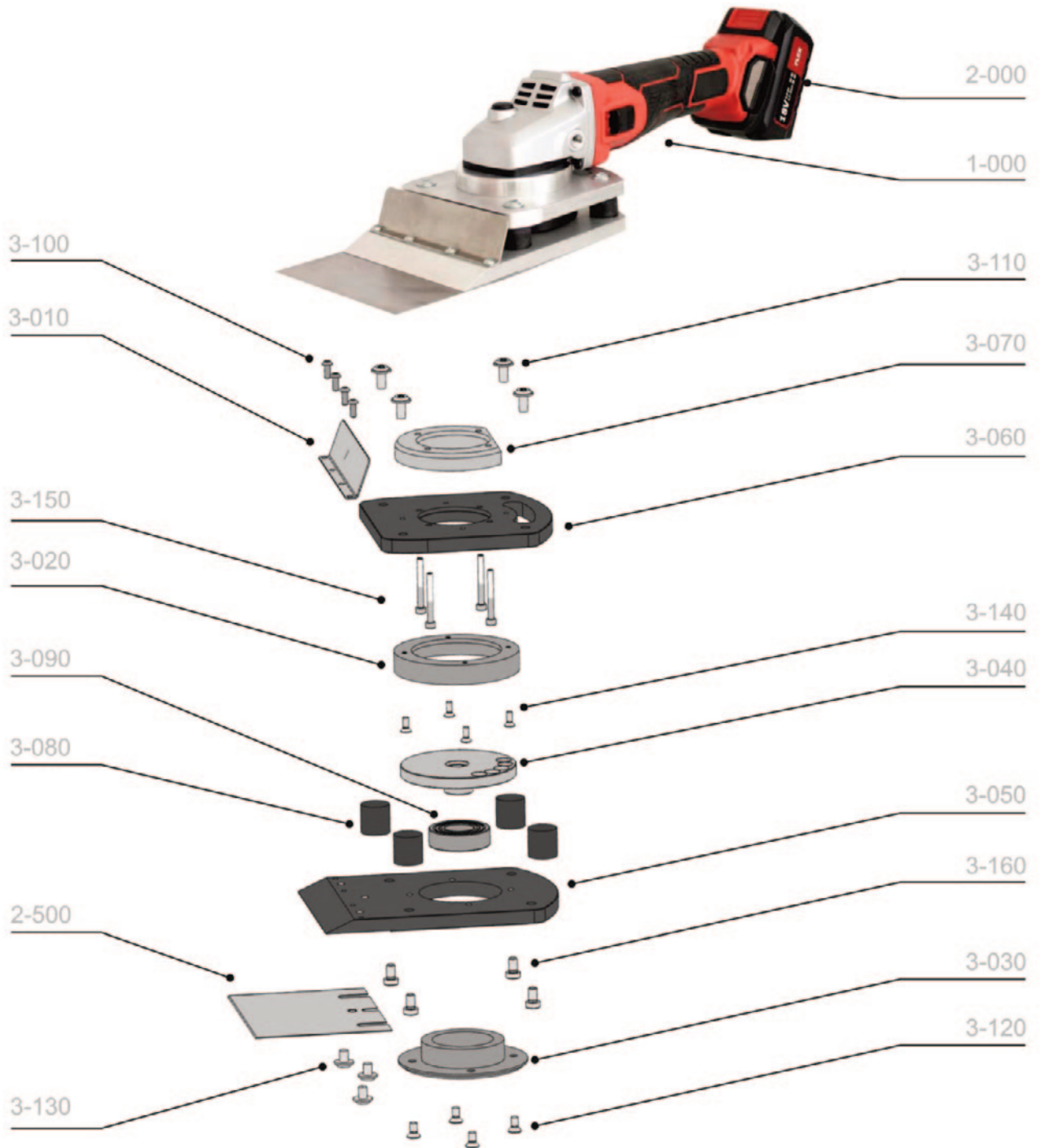
Janser GmbH

Bahnhofstraße 37
A-4860 Lenzing

office@janser.at
www.janser.at

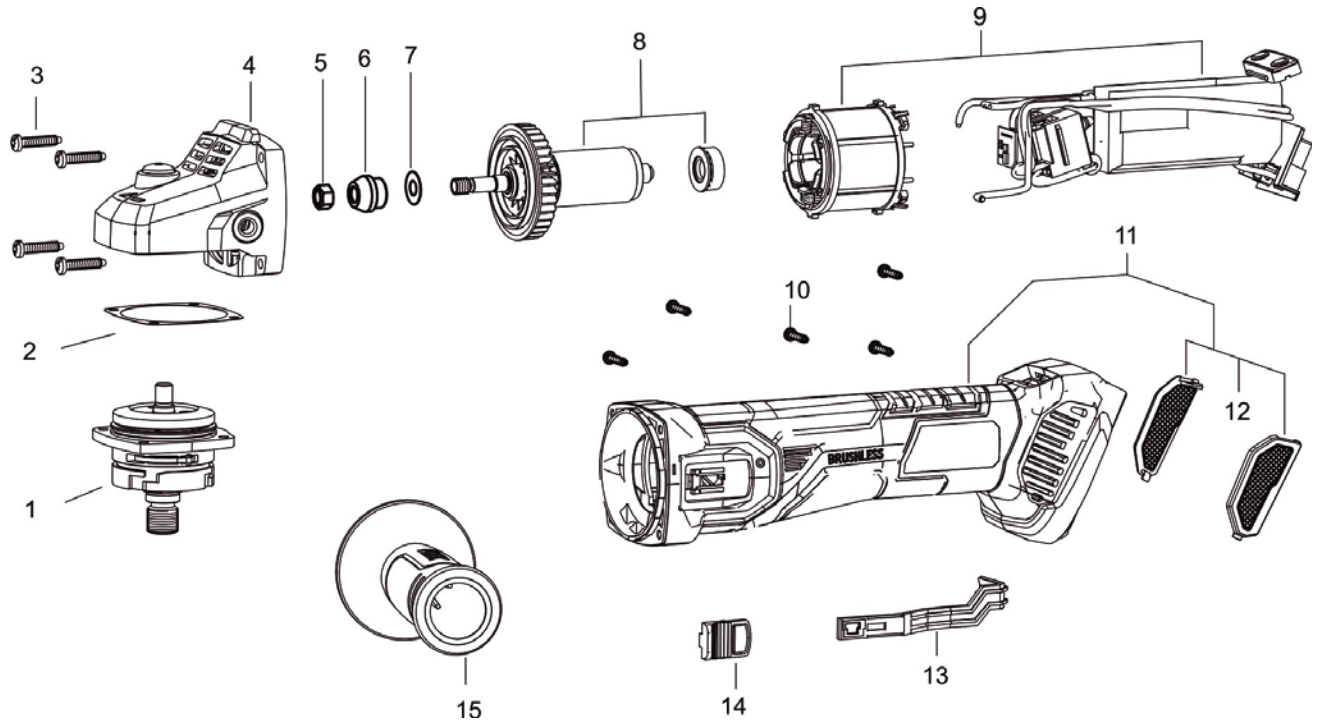
+43 7672 95154 0

Peripherie



Pos	Benennung1	Description	Qty	Janser-Ref
1-000	Antriebsmotor	Drive motor	1	111120081
2-000	Akku-Pack Li-Ion 5.0 Ah 18 V	Battery pack Li-Ion 5.0 Ah 18 V	1	111120083
2-500	Klinge 80x120x0,6mm	Blade v80x120x0,6mm	1	111120001
3-010	Abweiserblech	Deflector	1	111120101
3-020	Fingerschutz Kunststoff	Finger guard	1	111120103
3-030	Lagerdeckel	Bearing cover	1	111120105
3-040	Exzenter	Excenter	1	111120107
3-050	Grundplatte	Base palte	1	111120109
3-060	Adapter für Motoraufnahme	Motor adapter	1	111120111
3-070	Motoraufnahmering	Motor mounting ring	1	111120113
3-080	Gummi-Metall-Puffer	Rubber metall buffer	4	11112042
3-090	Rillenkugellager	Ball bearing	1	050204015
3-100	Linsenschraube 10.9 M4*10	Pan head screw M4x10	4	003404010
3-110	Linsenschraube 10.9 M6*12	Pan head screw M6x12	4	003506012
3-120	Senkschraube M5*10	Countersunk screw M5x10	4	007205010
3-130	Linsenschraube 10.9 M6*8	Pan head screw M6x8	3	003506008
3-140	Senkschraube M4*10	Countersunk screw M4x10	4	007204010
3-150	Zyl.Kopfschraube M4*35	Cylindrical head screw M4x35	4	004004035
3-160	Zyl.Kopfschraube M6*10	Cylindrical head screw M6x10	4	005706010









1-Anbaumotor



Pos	Benennung1	Description		Janser-Ref
1-001	Getriebewelle montiert	Gear shaft mounted	450.596	
1-002	Papierdichtung	Paper sealing	443.883	
1-003	Schraube	Screw	443.956	
1-004	Getriebegehäuse komplett	Gear case complete	505.161	
1-005	Mutter	Nut	387.258	
1-006	Ritzel	Pinion	450.618	
1-007	Staubscheibe	Dust washer	443.492	
1-008	Anker komplett	Anchor complete	505.196	
1-009	Elektronik komplett	Electronics complete	505.218	
1-010	Schraube 2.9x16	Screw 2.9x16	430.684	
1-011	Motorgehäuse komplett	Motorgehäuse komplett	505.234	
1-012	Staubabdeckung	Dust cover	450.723	
1-013	Schaltstange	Shift rod	505.188	
1-014	Schaltchieber	Shifter	494.941	
1-015	Seitengriff	Side handle	450.774	

Zubehör



Pos	Benennung1	Description	Qty	Janser-Ref
	Ersatzklinge 80x120x0,6mm	Spare blade 80x120x0,6mm	1	111 120 001
	Ersatz Akku-Pack Li-Ion 5.0 Ah 18 V	Replacement battery pack Li-Ion 5.0 Ah 18 V	1	111 120 083
	Schnelladegerät 10.8/18 Volt	Quick charger 10.8/18 volt	1	111 120 084
	AKKU Ladekit bestehend aus Schnelladegerät 10.8/18 V und zwei Akku-Packs 5,0 Ah 18 V.	BATTERY charging kit consisting of a 10.8/18 volt quick charger and two 5.0 Ah 18 V battery packs.	1	111 120 082
	Schnittschutzhandschuhe Größe 10	Protective gloves size 10	1	119 910 010
	Arbeits-Schutzbrille	Safety goggles	1	440 060 000
	Inbusschlüssel SW 4,0x150 mit T-Griff	Hexagon key SW 4,0x150 with T-handle	1	080 000 264
	Systainer L187 ohne Etiketten, ohne Inhalt	Systainer L 187 without labels, without content	1	262 496 400
	Bodenpolster	Base cushion	1	262 496 410